

2005

COUNCIL & UNIT PLANNING GUIDE



**Philmont Scout Ranch
High Adventure Division
Boy Scouts of America**

PREFACE

This guide is designed to assist council contingents and units plan a successful Philmont adventure. Your Philmont journey has already begun and proper preparation now will result in a smoother more enjoyable Expedition.

It is important that each adult advisor become familiar with every aspect of the trip. Equally important is sharing information with participants and their parents. Philmont is not like **other** Scout camps and Philmont may not be for everyone. The stamina required to hike is much greater because of the distance, elevation changes and length of the Expedition. Every participant should understand Philmont's Risk Advisory (page 17) and be aware of potential hazards. Philmont is placing a special emphasis on physical preparation, including a revised **Health and Medical Record**. However, each group must carefully select participants that are capable of completing an Expedition. The height/weight chart on page 20 can serve as a guide to help determine who will attend.

Philmont and the Boy Scouts of America expects all participants will conduct themselves in a Scout-like manner. An estimated 21,000 participants will attend Philmont in 2005 from across the nation and several foreign countries. This provides many enriching opportunities, but also requires respect for other participants. Let the Scout Oath and Law guide the actions of your group in **all** situations.

Please read this guide carefully. Experienced advisors and new advisors will find the answers to their many questions regarding Philmont. Good luck as you continue preparing for your Expedition, we look forward to serving your group next summer.

Mark S. Anderson
Director of Program
Philmont Scout Ranch
17 Deer Run Rd.
Cimarron, NM 87714
505-376-2281
Fax: 505-376-2636
Email: manderson@philmontscoutranch.org

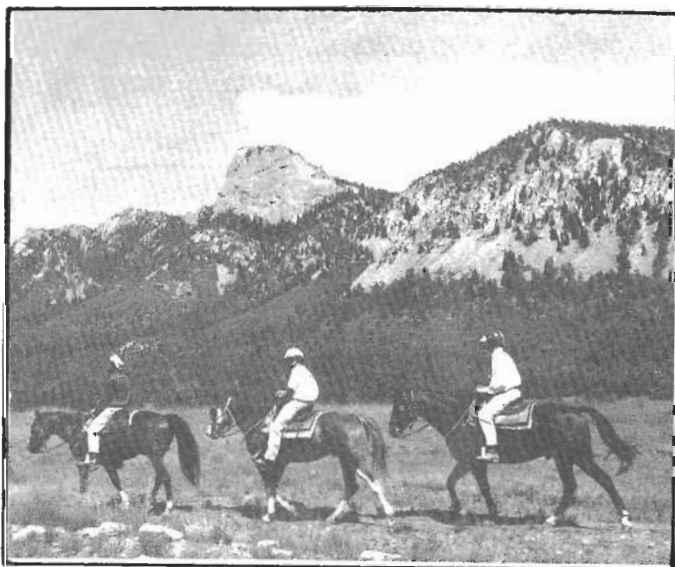
Email For General Philmont Info:
camping@philmontscoutranch.org

Website: www.scouting.org/philmont

Copyright © 2004
Philmont Scout Ranch
Cimarron, New Mexico



CONTENTS



ADULT LEADERSHIP	1
YOUTH PARTICIPANTS	1
YOUTH PROTECTION	2
OTHER REQUIREMENTS	3
ORGANIZE YOUR CREW	4
EXPEDITION TRAINING	5
ADVISORS KIT	5
FEE PAYMENT POLICY	6
FEE PAYMENT SCHEDULE	6
SCHOLARSHIPS	6
CONTINGENCY FUND	6
BUDGET	6
BUDGET WORKSHEET	7
RECOMMENDED PREPARATION PLAN	8,9
ARRIVAL/DEPARTURE	10
SECURITY	10
INSURANCE	10
TRANSPORTATION	11,12
OVERNIGHT ACCOMMODATIONS IN THE PHILMONT AREA	13-15
PHILMONT PARENT'S RALLY	16
RISK ADVISORY	17
RECOMMENDATIONS REGARDING CHRONIC ILLNESS	18-20
PHILMONT WEIGHT LIMITS FOR BACKPACKING & HIKING	20
PHYSICAL PREPARATION FOR A PHILMONT TREK	21
SUGGESTED CONDITIONING PROGRAM	21
FOOD SUBSTITUTION FOR ALLERGIC OR RELIGIOUS REASONS	22
PROMOTIONAL HELP	23
TRADING POST	23
PRESERVING THE PHILMONT WILDERNESS	23
PHILMONT GLOSSARY	24
SPECIAL INDIVIDUAL TREK EXPERIENCES	25

PHILMONT